

Trane CCUD 209

Specifications

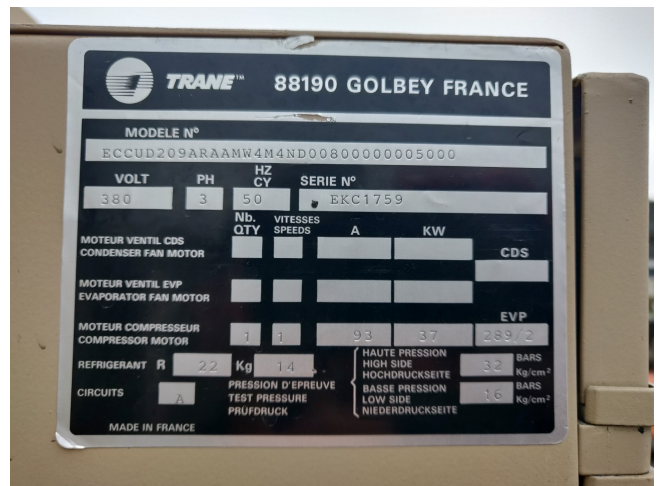
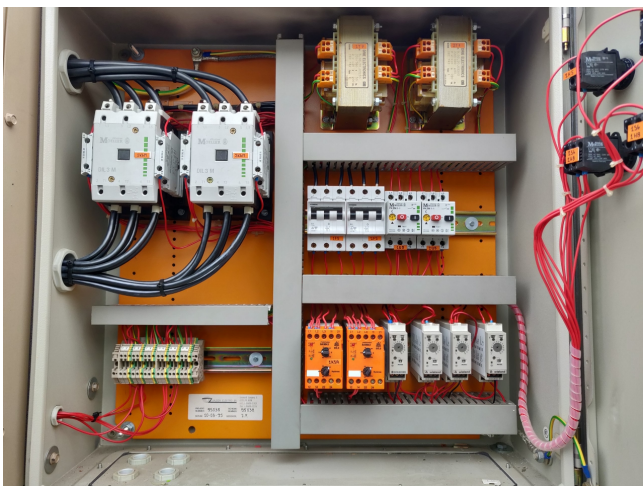
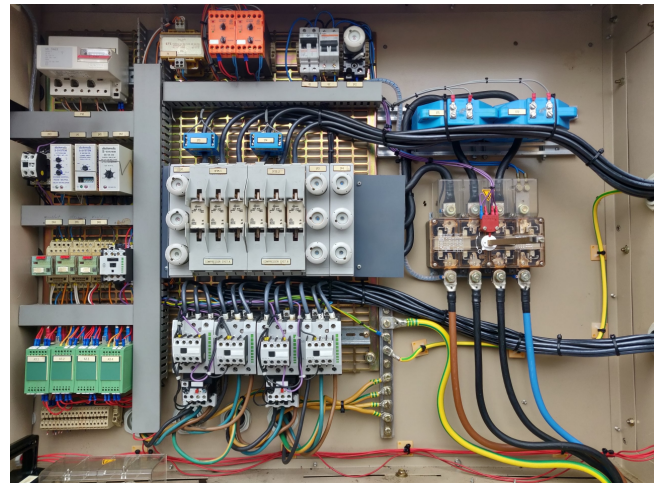
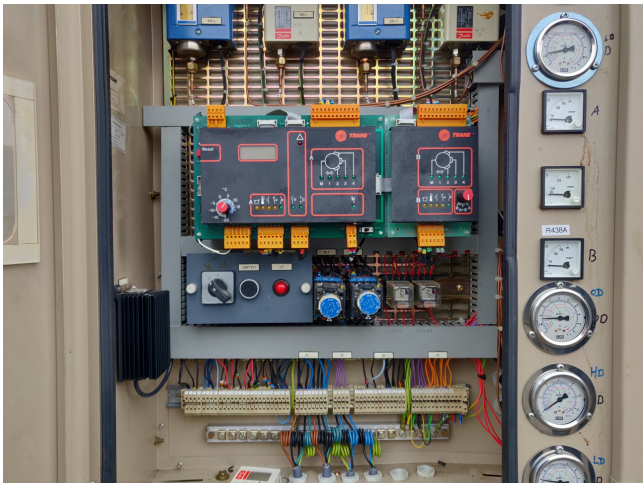
Hersteller	Trane
Typ	CCUD 209
Product type	Air Cooled Chiller (split-unit)
Kälteleistung kW	318,2
Kälteleistung Tons	90,47
Kältemittel	Freon
Gewicht in kg.	2280
Stock	1

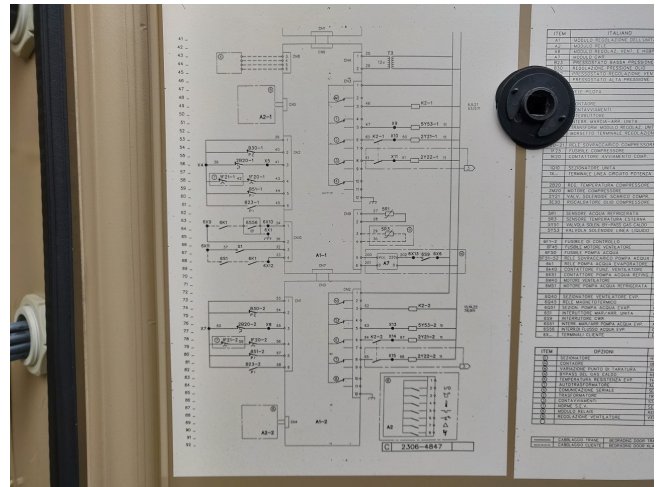
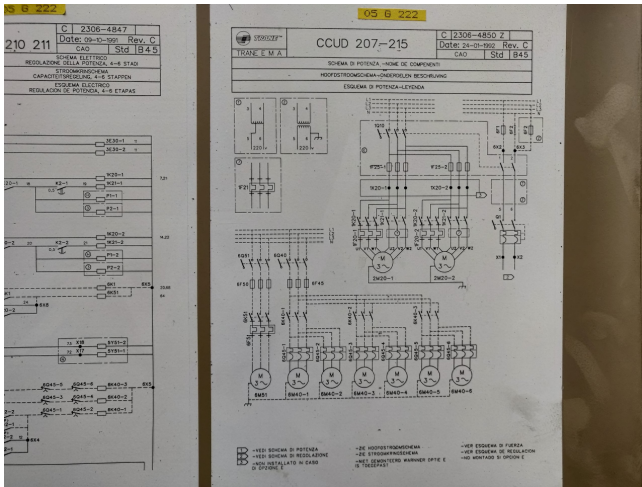


Description

Used Trane CCUD 209

Gebraucht, aber in gutem Zustand. Luftgekühlte Kältemaschine (Split-Einheit) Typ CCUD 209 (Modell CCUD zur Verwendung mit ferngekühltem Kondensator). Für alle anderen Spezifikationen siehe das Bild des Hersteller-Typenschildes oder die angehängte PDF-Datei (falls verfügbar).
"* Warum sich für HOSBV entscheiden? Waren nicht nur die größten Gebrauchtkältespezialisten in Europa, wir liefern aber auch alle geräte inklusive umfangreicher prüfung, garantie und industriereinigung. Optional können wir Versand- und Exportdokumente arrangieren. "





Electrical and general data (50 Hz)

Model	COWD 205 Z	206 Z	207 Z	208 R	209 R	209 R	210 R	211 R	212 E	214 R	215 E
Nominal cooling capacity (l)	135.2	158.0	196.3	231.5	273.1	318.2	364.5	381.4	451.4	523.0	600.7
Power input (l)	81.4	86.8	45.9	58.9	64.5	71.3	78.3	86.7	93.7	107.0	122.0
No. of compressors/circuits	2	2	2	2	2	2	2	2	2	2	2
Capacity steps	75-50-25	75-50-33	83-50-25	75-50-33	81-44-22	83-50-33	81-44-29	83-50-33	75-50-33	71-43-21	75-50-25
Rated load amps (2)	74	90	112	162	166	170	191	212	226	267	308
Starting amps (3)	144	178	218	333	385	389	443	464	530	744	782
Evaporator liquid content	1	114	103	102	88	88	164	164	140	188	328
Condenser water content	1	22	20	29	32	45	45	52	52	60	62
R22 operating charge	30	32	40	48	48	62	62	68	80	108	120
Unit operating weight (4)	1300	1300	1450	1800	1950	2200	2200	2340	2550	3110	4730

(1) At +4°C ambient water leaving and 20°C condenser water leaving temperatures. Standard coil load conditions.
 (2) At 11.5/5.0 at 4 bar suction pressure, 23 bar discharge pressure.
 (3) At start winding start. One compressor at full load, the second one starting, the size 209R, 210 R and 214 E the compressor starting in the largest one of the two.
 (4) All capacity and weight data apply to the series COWD units with built-in water cooled condensers. For series CCUD units without condensers, for use with remote air cooled condensers refer to your nearest Sales Office for information.